

High shear and high flow in a compact sanitary design

Admix expands their comprehensive product line with the introduction of a new in-tank, bottom mount unit. The Flowshear bottom mount disperser & emulsifier offers unrivaled versatility allowing processors to mix a wide range of batch sizes with minimal starting liquid levels.

The Flowshear's unique mixing head design provides high shear and superior flow by combining a rotor-stator with an optional impeller utilizing advanced Jetfoil™ technology. This ultra sanitary machine provides maximum versatility to meet your most demanding processing needs.

Flowshear Advantages

- ✓ Low starting liquid level and small batch capability
- ✓ Substantial reduction of air entrainment
- ✓ Reduces the need for secondary agitation
- ✓ Can be combined with scraped surface or counter rotating agitators
- ✓ Optimized for high viscosity personal care, pharmaceutical and food products

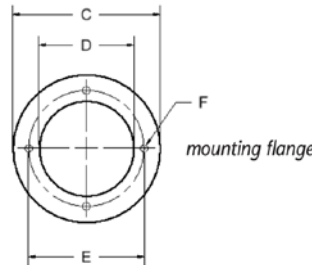
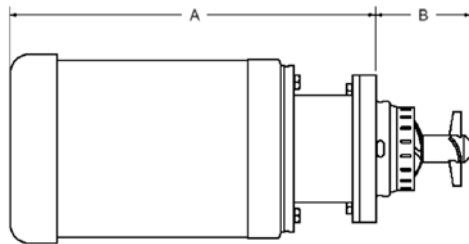


Flowshear Specifications

The Flowshear series of stainless steel mixers is available to suit your specific design and mounting requirements.

| Model | Motor HP | 60 Hz Speed RPM | Rotor Dia. (in) | Jetfoil Dia. (in) | Max Volume alone in vessel* | | Tip Speed | |
|---------|----------|-----------------|-----------------|-------------------|-----------------------------|----------|-----------|--------|
| | | | | | (gals) | (liters) | (FPS) | (m/ps) |
| FS-425 | 10 | 3450 | 4.25 | 0 | 85 | 322 | 63.98 | 19.51 |
| FS-425F | 15 | 3450 | 4.25 | 4 | 205 | 776 | 63.98 | 19.51 |
| FS-500 | 25 | 3450 | 5 | 0 | 160 | 606 | 75.27 | 22.95 |
| FS-500F | 30 | 3450 | 5 | 4.7 | 365 | 1381 | 75.27 | 22.95 |
| FS-800 | 30 | 1750 | 8 | 0 | 500 | 1893 | 61.09 | 18.63 |
| FS-800F | 40 | 1750 | 8 | 7.5 | 1150 | 4353 | 61.09 | 18.63 |
| FS-900 | 50 | 1750 | 9 | 0 | 825 | 3123 | 68.72 | 20.95 |
| FS-900F | 75 | 1750 | 9 | 8.5 | 2000 | 7570 | 68.72 | 20.95 |

*This table represents estimates only. Actual product viscosity and other possible agitation in the vessel could increase or decrease maximum batch size.



| Model | Dimensions (inches) | | | | | |
|---------|---------------------|----|----|-----|------|---------|
| | A* | B | C | D | E | F |
| FS-425 | 26 | 5 | 9 | 6 | 7.25 | 1/2 (4) |
| FS-425F | 31 | 6 | 9 | 6 | 7.25 | 1/2 (4) |
| FS-500 | 32 | 6 | 11 | 7 | 9 | 1/2 (4) |
| FS-500F | 34 | 7 | 11 | 7 | 9 | 1/2 (4) |
| FS-800 | 36 | 8 | 11 | 7 | 9 | 1/2 (4) |
| FS-800F | 39 | 10 | 13 | 9.5 | 11 | 5/8 (4) |
| FS-900 | 40 | 9 | 13 | 9.5 | 11 | 5/8 (4) |
| FS-900F | 41 | 12 | 13 | 9.5 | 11 | 5/8 (4) |

*Based on TEFC motors

Why Flowshear?

The Flowshear creates an ideal balance between high shear and high flow by controlling residence time within the work zones, and by generating high tank turnover rates throughout the vessel, reducing or eliminating the need for secondary agitation.

This innovative technology reduces batch times for a broad range of thin or viscous products, and allows maximum utilization of vessel geometry.

Our years of expertise is incorporated into the Flowshear design, delivering easy cleanability and full compliance with regulatory and cGMP requirements.

Features & Benefits

- Allows full shear at volumes as low as 5% of finished tank volume, ideal for low water phases
- Self-draining sanitary seals with our exclusive auto seal shut off to prevent premature seal failure
- Compact mounting flange with sanitary O-ring design
- Designed with minimal protrusion allowing easy addition to scraped surface and counter rotating equipped vessels
- Ideal for low water / gum phase creation
- Total washdown and CIP capability
- Low maintenance design for minimum downtime – no bushings, wear sleeves, shims or bearings to wear out
- Optional impellers and stators to meet specific shear and flow requirement